



The industrial hemp French branch and its structuring evolution

by Olivier Joreau

vice-president of Interchanvre

EIHA congress
Koeln - the 18th of May, 2011

A branch standing at the crossroads

French Usable Agricultural Area:	30.000.000 Ha
included :	
soft wheat:	4.800.000 Ha
maize :	1.700.000 Ha
rape :	1.500.000 Ha
sunflower :	700.000 Ha
rye :	31.000 Ha
lavender:	14.000 Ha
hemp :	10.000 Ha

only 0.03 % of the UAA or 1 Ha for 3000....

... It let place for the branch development before
to encroach on feed production

...



Market on great growth

Market paper fibers restarting, relating to the current economic climate, linked to the important recovery of the flax value – is this market perennial ?

Permanent augmentation of the technical fibers market share in insulation.

Market opening into automotive middle-of-the-range and into decking

Market explosion for building shives

Market starting for bearing blocks

Price burning for the hempseeds for feeding



An important processing capacity

La Chanvrière de l'Aube :	5000 Ha / 35000 T of straw
Agrofibre Euralis :	3500 Ha / 25000 T of straw
Eurochanvre / Interval :	2000 Ha / 15000 T of straw
Cavac Biomatériaux :	1500 Ha / 10000 T of straw
Agrochanvre :	1000 Ha / 7000 T of straw
Planète Chanvre (building on progress) :	1000 Ha / 7000 T of straw
Est Chanvre (building on progress) :	1000 Ha / 7000 T of straw
Terrachanvre :	100 ha / 700 T of straw
Starthemp :	100 Ha / 700 T of straw
Poitou Chanvre :	100 Ha / 700 T of straw
Chanvre Mellois :	100 Ha / 700 T of straw
Other processors:	500 Ha / 3500 T of straw
Total French capacity:	16000 Ha / 110000 T

A paradoxical and hazardous situation

processing capacity : 16000 ha

Area 2008 : 7500 Ha

Area 2009 : 12500 Ha

Area 2010 : 8500 Ha

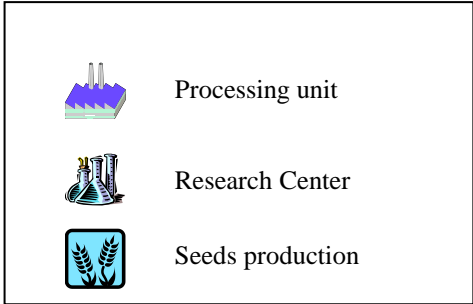
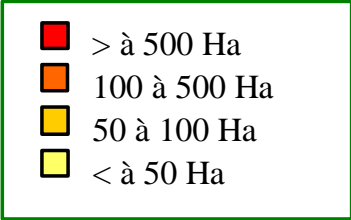
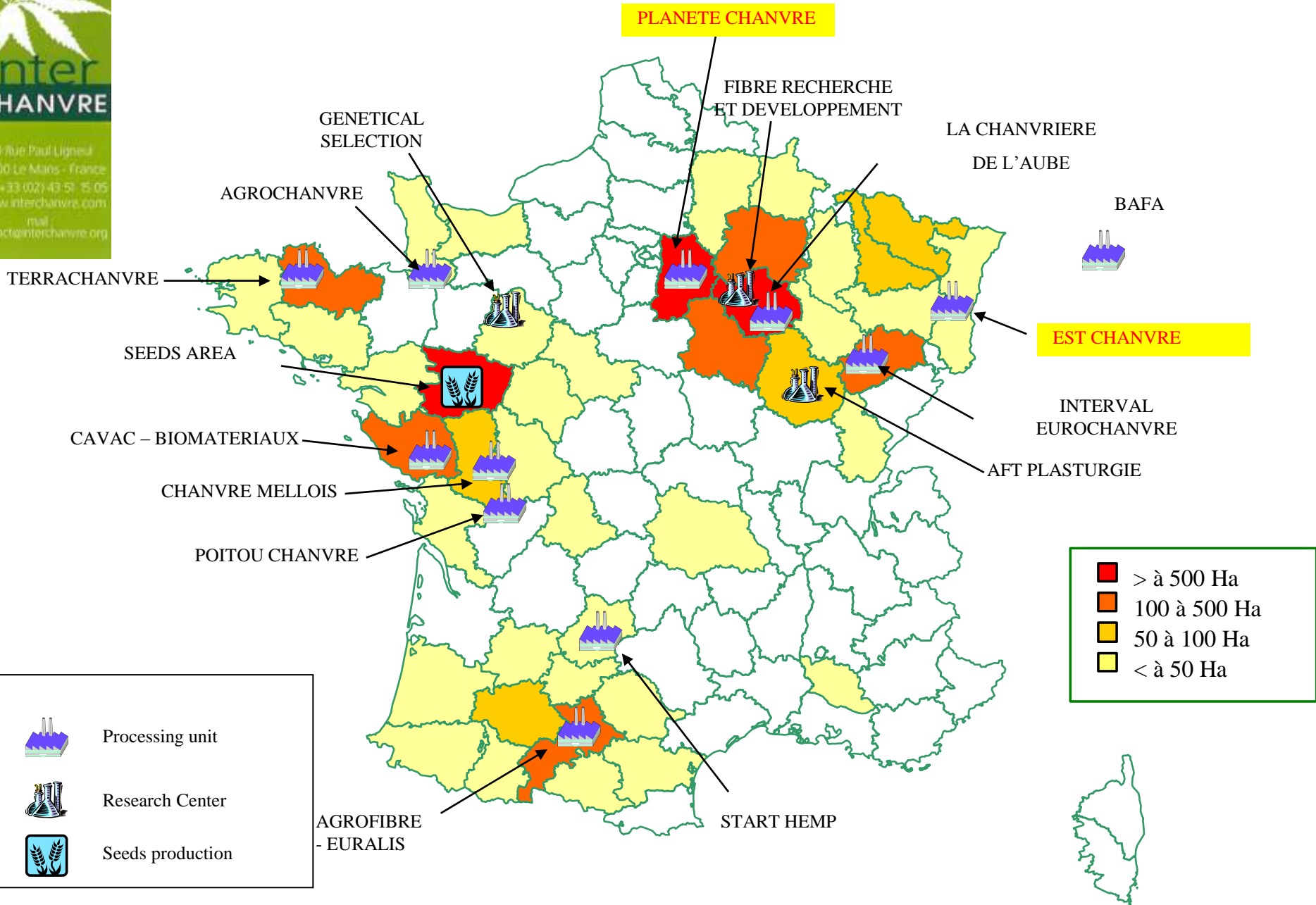
Area 2011 : 6000 Ha

Cause : very high price for dominant agricultural commodities
(cereal, oil, protein)

Consequence : great economic difficulties for the processors

hazard : durable desappointment of the buyers because of the
lack of matter : the end of the branch ?

Production of hemp in France - 2011

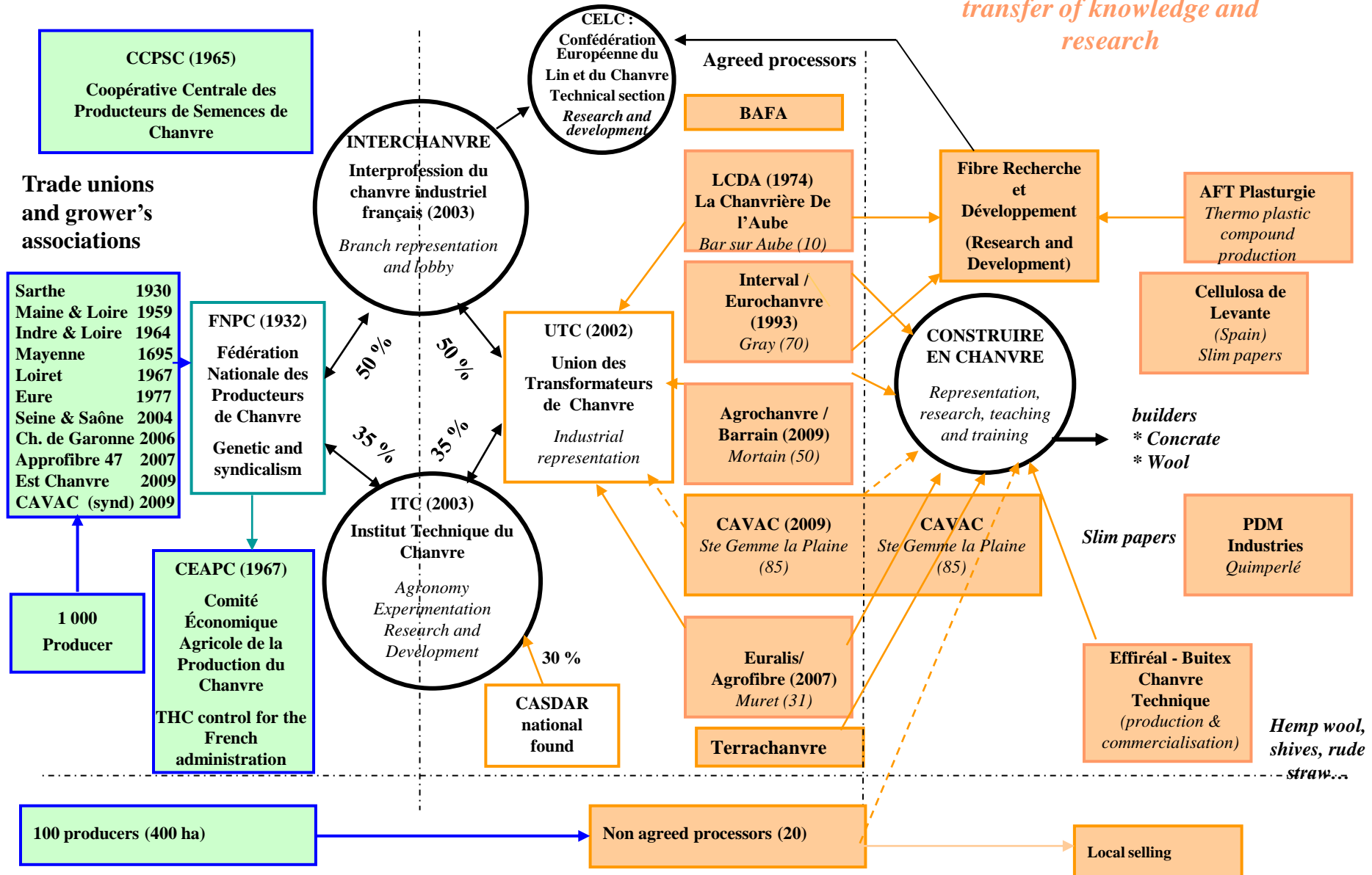


The French branch, before

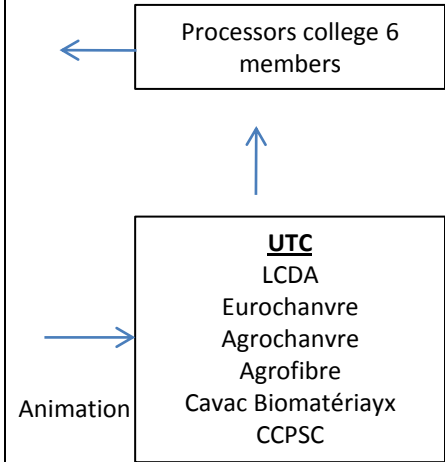
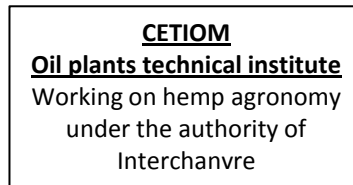
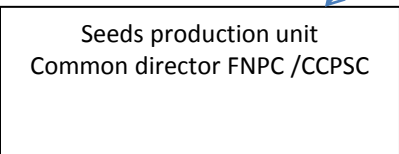
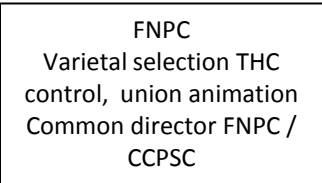
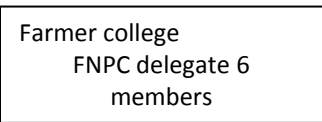
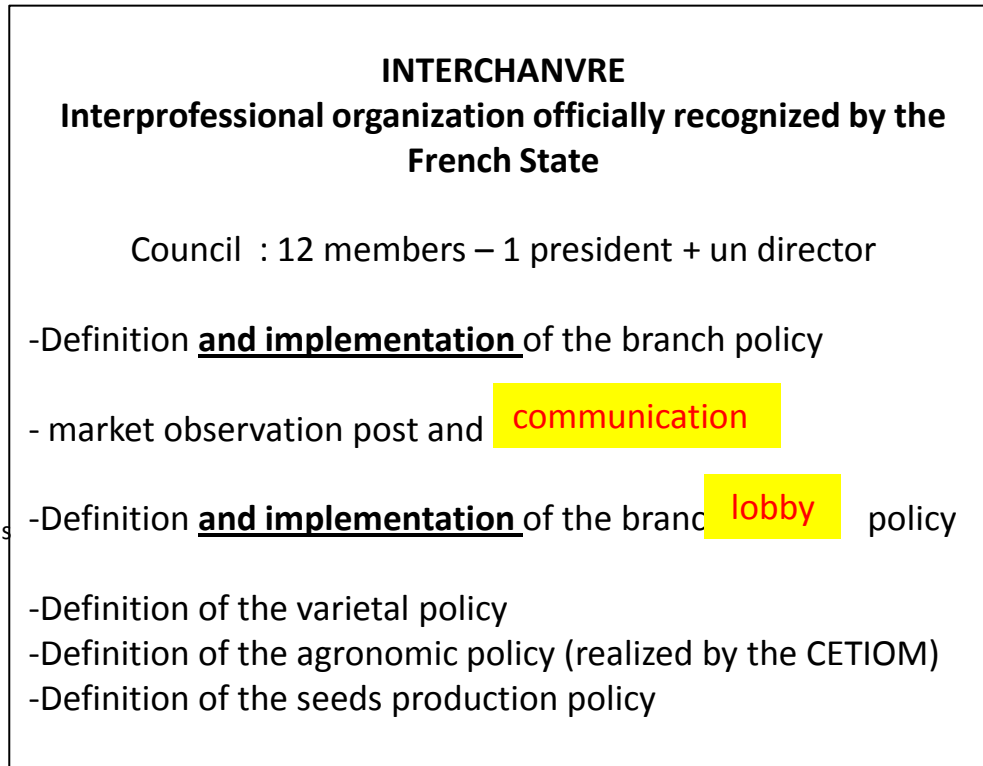
Producing branch

Industrial branch

2nd processing branch, transfer of knowledge and research



The French branch, after



Seeds needs orientation

varietal needs orientation

Animation



Synergy to find with the European partners

Interchanvre join EIHA on 2011

Wish to work on permanent link with EIHA

Connection the two lobby networks

- scientific network of the Nova Institute
- political network of Interchanvre et EIHA (UE Parliament, UE Commission)

Networking on communication tools

- European hemp network
- Hemp and flax network of France, Belgium and Holland



Thank you for your attention