



The French hemp branch Structure, trends and lobby activities

by Sylvestre Bertucelli

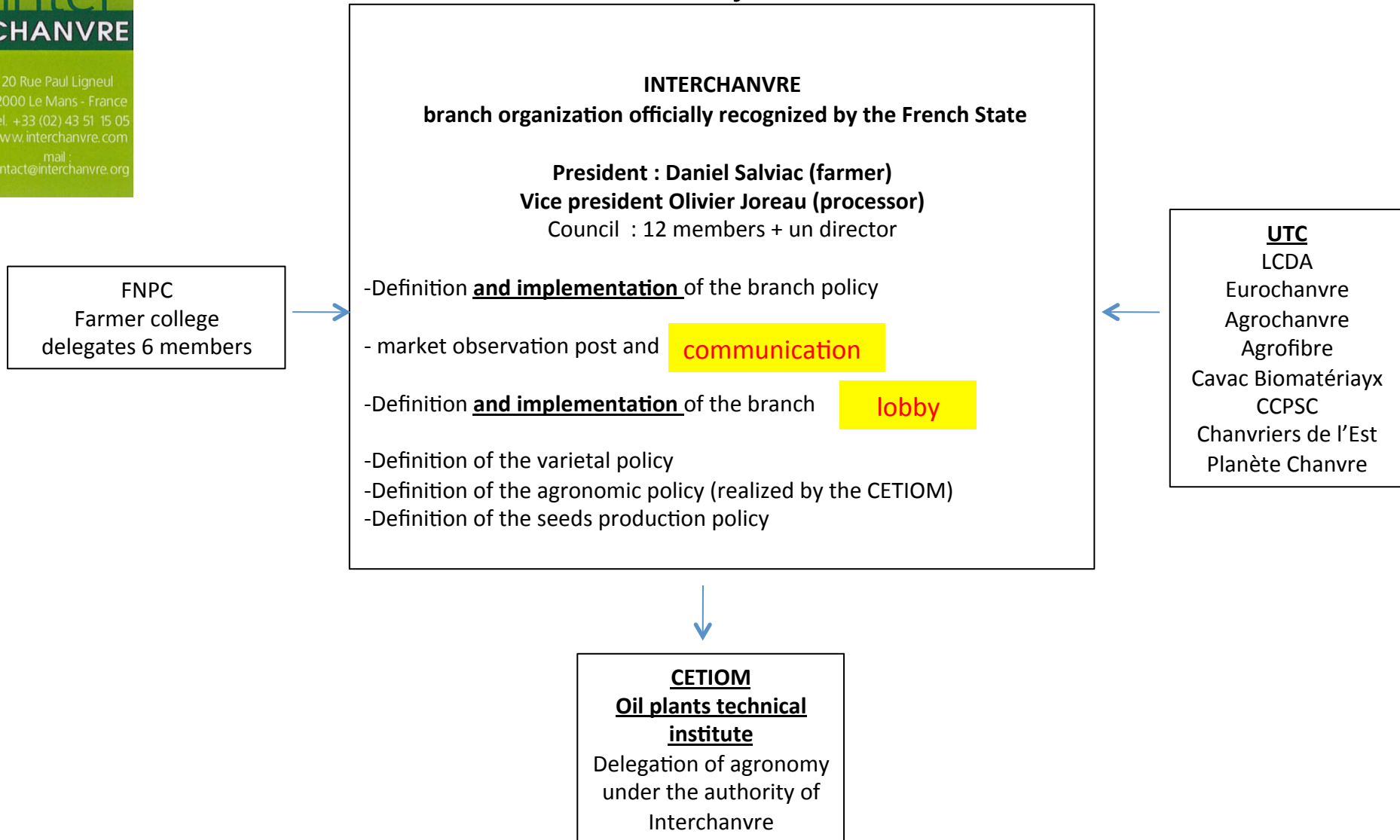
Manager of Interchanvre

EIHA Congress

Köln- the 23th of May - 2012



The situation presented by the vice-President Olivier Joreau, last year was :



During the last 12 months

Long and difficult evolution from a standard association to an organized and agreed branch organization

- Inscription on the rural code on November 2011
- Validation by the government of our branch deal on April 2012
- Obligation and rights of an agreed branch organization (in France)
 - To represent at least 50 % of the branch (90 % for us)
 - To represent at least 2 level of the branch (for us farmers and processors)
 - No intervention on the market (no price fixing, no trade, no illegal deal between members)
 - Dedicated salaries

- Rights

- Possibility to edict rules which have the strength of law on the branch (e.g. : size for fruits, categories for meat...)
- Possibility to collect funds on the branch, funds that all people working on the branch have to pay (members of Interchanvre or not)
- For us : contribution on seeds

- Mandates (agreed by the State)

- Lobby
- Communication
- Agricultural development



- Lobby

- National level

- ✓ Interchanvre has decided to ally very closely with Construire en Chanvre to develop a structured lobby on the building branch, and works now with the building administration)
- ✓ Interchanvre continue his lobby with the agricultural administrations

- Communication

- Interchanvre has decided and started to developed is proper communication on hemp, especially on building.



Cipalin



Commission
Vitis



polskilen
L
LEADER GROUP



INTERCH
CHANVRE



C.I.D.E. ASE

Amendment proposal n° of modification of chapter 2 (*Payment for agricultural practices beneficial for the climate and the environment*) of the proposal for a regulation of the European Parliament and of the Council establishing rules for direct payments to farmers under support schemes within the framework of the common agricultural policy (COM(2011) 625 final/2)

CHAPTER 2

Payment for agricultural practices beneficial for the climate and the environment

Article 29

General rules

- Farmers entitled to a payment under the basic payment scheme referred to in Chapter 1 shall observe on their eligible hectares as defined in Article 25(2) three agricultural practices beneficial to the climate and the environment contained in the following list:
 - to have three different crops on their arable land where the arable land of the farmer covers more than 3 hectares and is not entirely used for grass production (sown or natural), entirely left fallow or entirely cultivated with crops under water for a significant part of the year;
 - to maintain existing permanent grassland on their holding;
 - to have ecological focus area on their agricultural area;
 - to cultivate species beneficial to the environment including biodiversity and water quality.
- Without prejudice to paragraphs 3 and 4 and to the application of financial discipline, linear reductions in accordance with Article 7, and any reductions and penalties imposed pursuant to Regulation (EU) No [...] [HZR], Member States shall grant the payment referred to in this Chapter to farmers observing those of the four practices referred to in paragraph 1 that are relevant for them, and in function of their compliance with Articles 30, 31, 32, and 33.

Article 33 (adding)

Cultivation of species beneficial to the environment including biodiversity and water quality.

- Farmers shall ensure that at least 5 % of their eligible hectares as defined in Article 25(2), are cultivated with species beneficial to the environment including biodiversity and water quality.

- The species considered need no or few of nitrogen inputs or no or few chemical treatments.
- The Commission shall be empowered to adopt delegated acts in accordance with Article 55 to further define the species beneficial to the environment including biodiversity and water quality referred to in paragraph 1 and 2 of this Article.

JUSTIFICATION:

Some crops, such as leguminous (soybeans, peas, lupins, faba beans and alfalfa) and fiber crops (flax and hemp) show interest in the preservation of the regular biodiversity and the remarkable biodiversity:

- Reservoir of biodiversity of pollinating insects and fragile arthropods
- Auxiliaries crop reservoir, natural predators of pests,
- Refuge area for wildlife

The introduction of crops that require little or no chemical treatment reduces the pressure of pests and diseases on crops throughout the rotation by extending it. These cultures have a direct impact on improving water quality.

Moreover, these cultures present other positive amenities including their social and environmental performance:

- tank of non-relocatable employment
- Perennial storage of greenhouse gas emissions in consumer products (building, transport, leisure),
- Limitation of emissions of greenhouse effect gases by the introduction of leguminous in the rotation (less nitrogen fertilizers).

It is possible to develop products that support the objectives of the ecological focus area. Moreover, in some regions, soil and climatic conditions do not allow that the only fixed landscape elements meet the requirements ecological focus area.

On numerous occasions the European authorities have stressed their desire to see the CAP after 2013 to help the fight against climate change and limit dependence on the European Union imports of vegetable proteins.

- Initiative report of the European Parliament (2009/2236 (INI)-Lyon report § 71 and 78),
- European Parliament report on the CAP towards 2020 (2011/2051 (INI) report Dess § 34)
- Communication from the Commission to the European Parliament on the use and change in land use (LULUCF) COM (2012) 94 p. 8 and 9
- Initiative report of the European Parliament (2010/2111 (INI) – report Häusling.

The soybean, pea, lupin, faba bean, hemp, flax and alfalfa cater for the needs of society and relayed:

Contacts:

C.I.D.E. Asbl: Eric GUILLEMOT: +33.1.44.17.57.00 ; +33.6.14.63.89.24 ; eric.guillemot@coopdefrance.coop
Cipalin: Christophe MALLET: +33.1.40.41.11.66 ; +33.6.80.65.66.63 ; contact@lin.asso.fr
Interchanvre: Sylvestre BERTUCELLI: +33.2.43.51.15.05 ; +33.6.80.23.33.52 ; sylvestre.ber্তুcelli@interchanvre.org
FOP : Grégoire DUBLINEAU : +33.1.40.68.48.81 ; +33.6.77.02.16.50 ; g.dublineau@prolea.com



- Lobby

- European level, on CAP after 2013
- Interchanvre has been supported from the beginning by EIHA
- All actions made by Interchanvre have been agreed and monitored by EIHA
- Started on April 2011, to modify on a better way the proposition of the European Commission
- During the year we have been joined by the European flax and protein branches
- Two propositions
 - ✓ to be included into the ecological focus area (art 32)
 - ✓ To make consider fibre and protein cultivation has one option to respect the conditions of earning of the future 30 % of ecological subsidies (new art 33)

CETIOM

French Technical Center for Oilseed
crops and Industrial Hemp



CETIOM Organization

www.cetiom.fr

- 120 persons
- 2 laboratories
- 1 plant pilot
- 10 experimental stations
- 12 regional development stations

○ Siège : Direction - Administration ● Unité spécialisée
● Bureau régional de développement ● Station d'expérimentation



CETIOM missions

- Objectives :
 - Improve oilseed and hemp competitiveness with agronomic technics and adaptation of the production to the economical context, regulatory requirements, societal demands
 - Cetiom programs are to optimize the oilseed crops and hemp production and to develop outlets
 - The program is integrated with interprofession ONIDOL for oilseeds and Interchanvre for hemp
 - Budget for hemp agronomic research is proportional to hemp production area : 200 to 240 k€ / year
- Hemp thematics :
 - Developing / Managing experiments
 - Varieties (quality, pest/diseases resistances)
 - Agronomy (farming methods, technical itinerary)
 - Crop protection
 - Mechanization
 - Communication / Assessment / Training
 - Reports, papers, meetings, conferences
 - Animation and coordination of national / international agronomic research strategy



- The initiative : “Construction et Bioressources”

- largely supported by our Ministry of Environment
- Large structure (around 10 person in two years)
- Mandate: to promote vegetal into building (hemp, miscanthus, straw, flax...)
- Interchanvre is member
- Construire en chanvre too



inter
CHANVRE

20 Rue Paul Ligneul
72000 Le Mans - France
Tél. +33 (02) 43 51 15 05
www.interchanvre.com
mail :
contact@interchanvre.org



Thank you for your attention