

# 16th General Meeting of the EIHA

11 December 2014

Feierabendhaus, Hürth, Germany,  
11 am - 5 pm

**Michael Carus**  
Managing Director EIHA

**John Hobson**  
President EIHA



# Agenda

1. **Assessment of the votes**
2. **Status report on EIHA and Hemp**
3. **Looking back – EIHA activities in 2014**
4. **Financial report of the EIHA**
5. **Exoneration of the Board of Directors**
6. **Outlook, guidelines and focus of EIHA activities in 2014/15**

Welcome to the EIHA and let us determine that the General Meeting has been convened and a quorum is statutory.

First we have to introduce ourselves and to agree on the **keeper of the minutes**.

## Assessment of the votes

### 1. Regular member

- until 800 ha, 1,500 € and 10 votes
- 800 – 1,600 ha 1,650 € and 11 votes

### 2. Associate member

Each member has 1 vote

2012-01

### Application for membership: European Industrial Hemp Association (EIHA)

The applicant ..... wants to enter the EIHA as a

- regular member with contracted hemp cultivation area this year of ..... ha
- associate member with an annual membership fee of ..... EUR (minimum 300 €)

**Regular membership** is restricted to those legal entities or companies, which perform the processing of hemp straw to fibres and hurds/shives or hemp raw material like fibres, hurds/shives, seeds or flowers.

Regular members have a base of ten votes until 800 ha of area under hemp cultivation contracted by its processing plant(s) in the current year. Regular members must provide, to the Executive Director of EIHA, data on their cultivation and processing of hemp and on the use of their material by product line by, at the latest, 1. April of the following year. The annual membership fee for regular members is as follows:

until 800 ha: 1,500 €/10 votes || 800 - 1,600 ha: 1,650 €/11 votes || 1,600 - 2,400 ha: 1,800 €/12 votes

**Associated membership:** Any person or institution may become an associate member. Associate members may attend the annual EIHA meetings, having the right to speak and to make proposals there. The annual membership fee for associate members is 300 € (or voluntarily a larger fee).

## Participants & Votes of the 16th General Meeting of the EIHA

### **xxx members have 11 votes: xxx**

- Planete Chanvre (FR/DE)
- DunAgro (NL)
- HempFlax (NL/DE/RO)
- CAVAC (FR)

### **xxx members have 10 votes: xxx**

- Hanf Farm (DE)
- Hempro International (DE)
- Hemp Factory (DE)
- InterChanvre (FR)

### **xxx members have 1 vote: xxx**

First of all the identification of the voting rights of the participants is done: xxx votes altogether

# Agenda

1. Assessment of the votes
2. **Status report on EIHA and Hemp**
3. Looking back – EIHA activities in 2014
4. Financial report of the EIHA
5. Exoneration of the Board of Directors
6. Outlook, guidelines and focus of EIHA activities in 2014/15

# Present hemp industry

Total Hemp cultivation area in the EU approx. **15.000 ha in 2014.**

The European Industrial Hemp Association (EIHA) has 10 regular members (hemp processors) and 91 associate members from 34 countries (2014).

## Hemp processors



EIHA members



Non-EIHA members



## The European Industrial Hemp Association (EIHA) – Board of Directors, founded in 2005

- **2012:** At the **12th General Meeting of the EIHA on December 5th 2012 in Frankfurt**, the board of directors has been enlarged: Welcome **Mark Reinders** (HempFlax, NL) and **Sylvestre Bertucelli** (InterChanvre, F) to the board of directors!
- **2013:** At the **14<sup>th</sup> General Meeting on November 28th 2013 in Hürth**, the board of directors and the executive committee of the association were elected. **John Hobson** (Plant Fibre Technology, Great Britain) has been approved as President of EIHA for the next two years. **Bernd Frank** (Bave, Germany) is first deputy and **Olivier Joreau** (C.A.V.A.C Biomatériaux, France) is second deputy. **Mark Reinders** (HempFlax, NL) is third and **Sylvestre Bertucelli** (InterChanvre, F) fourth deputy of the board of directors. And: The board of directors has been enlarged: We welcome **Daniel Kruse** (Hempro Int., DE) to the board of directors!  
The **nova-Institut GmbH**, Hürth, with its managing director **Michael Carus**, was assigned with the management of the EIHA, initially for two years.

## The European Industrial Hemp Association (EIHA) – Board of Directors, founded in 2005

**John Hobson**, since 2005

President, Plant Fibre Technology Ltd. (UK)



**Bernd Frank**, since 2005

First Deputy Chair, BaFa/bave GmbH (Germany)



**Olivier Joreau**, since 2011

Second Deputy Chair, CAVAC BIOMATERIAUX (France)



**Mark Reinders**, since Dec. 2012

HempFlax BV (The Netherlands)



**Sylvestre Bertucelli**, since Dec. 2012

InterChanvre (France)



**Daniel Kruse**, since Nov. 2013

Hempro International GmbH & Co. KG (Germany)





## Additional regular members of EIHA in December 2014

Dun Agro B.V. (The Netherlands)  
**Albert Dun**



HANNAH BIZ d.o.o (Slovenia)  
**Dejab Rengeo**



Planete Chanvre (France)  
**Philippe & Antoine Heusele**



Assocanapa SRL (Italy)  
**Felice Giraud**



Hanf Farm GmbH (Germany)  
**Rafael Dulon**



Hemp Factory GmbH (Germany)  
**Daniel Kruse**

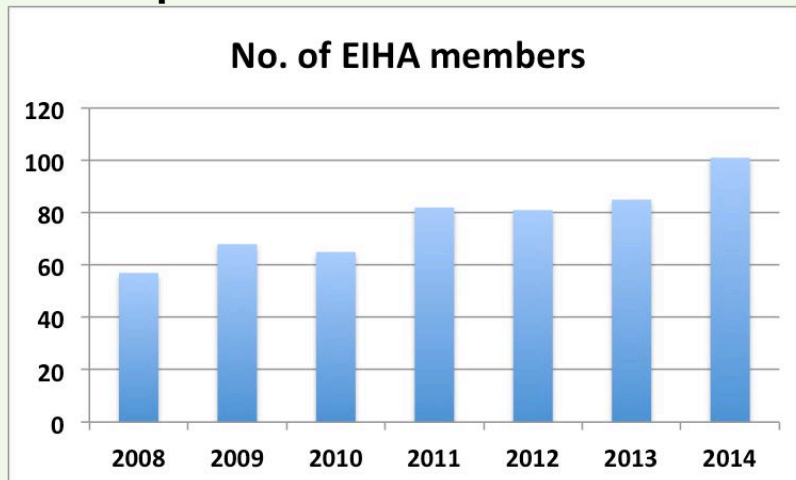
## 101 (10 regular and 91 associate) members of the EIHA in December 2014

- 77 members from 23 European Countries
- 24 members from other countries like Australia, Canada, New Zealand, South Africa, South Korea, Ukraine, Uruguay, USA

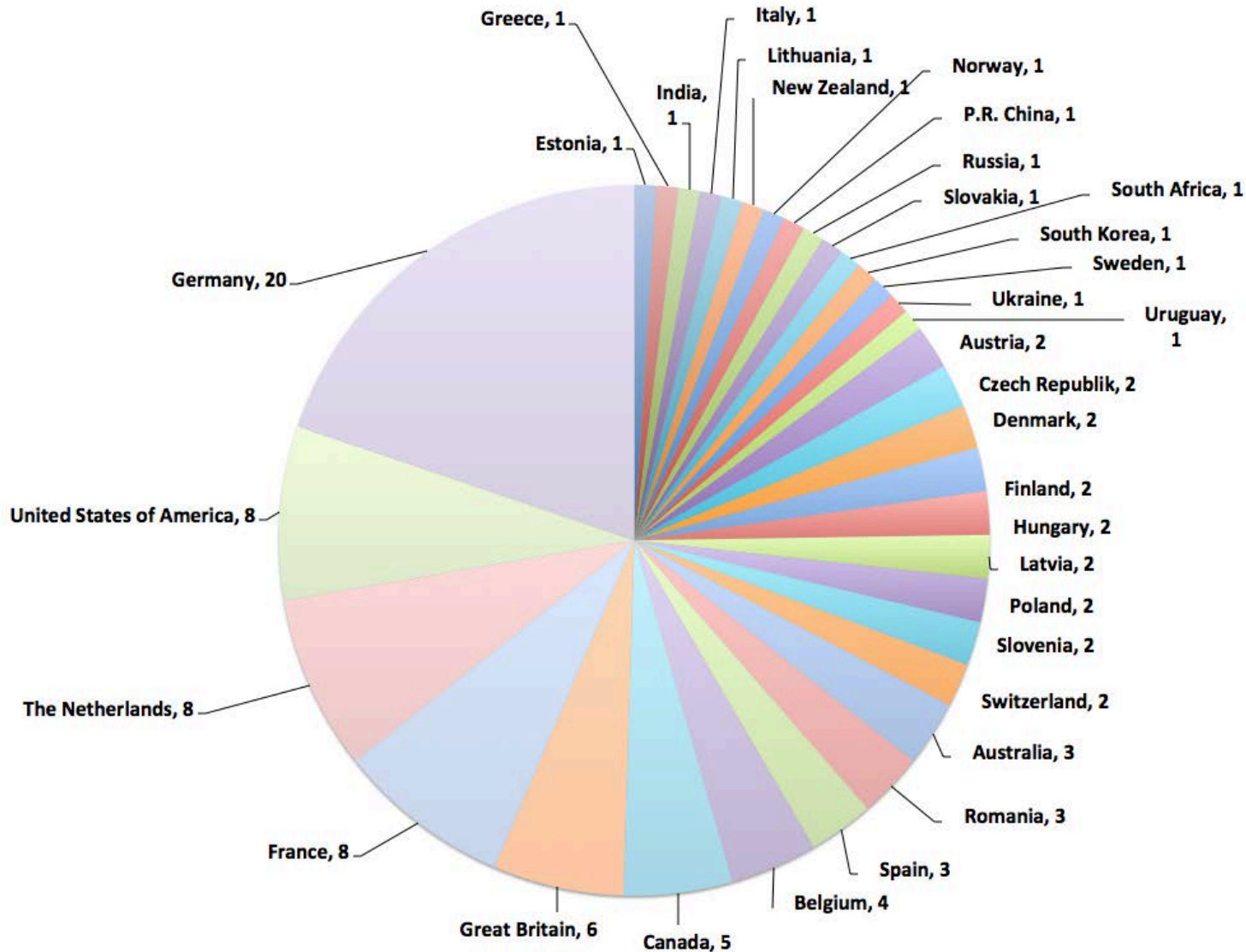
### Cooperation with

- InterChanvre, France
- Hemp Industries Association, USA
- Canadian Hemp Trade Alliance, Canada
- International Hemp Building Association, Ireland

### Development of the number of members:



# EiHA Member – country distribution



# Good news ...

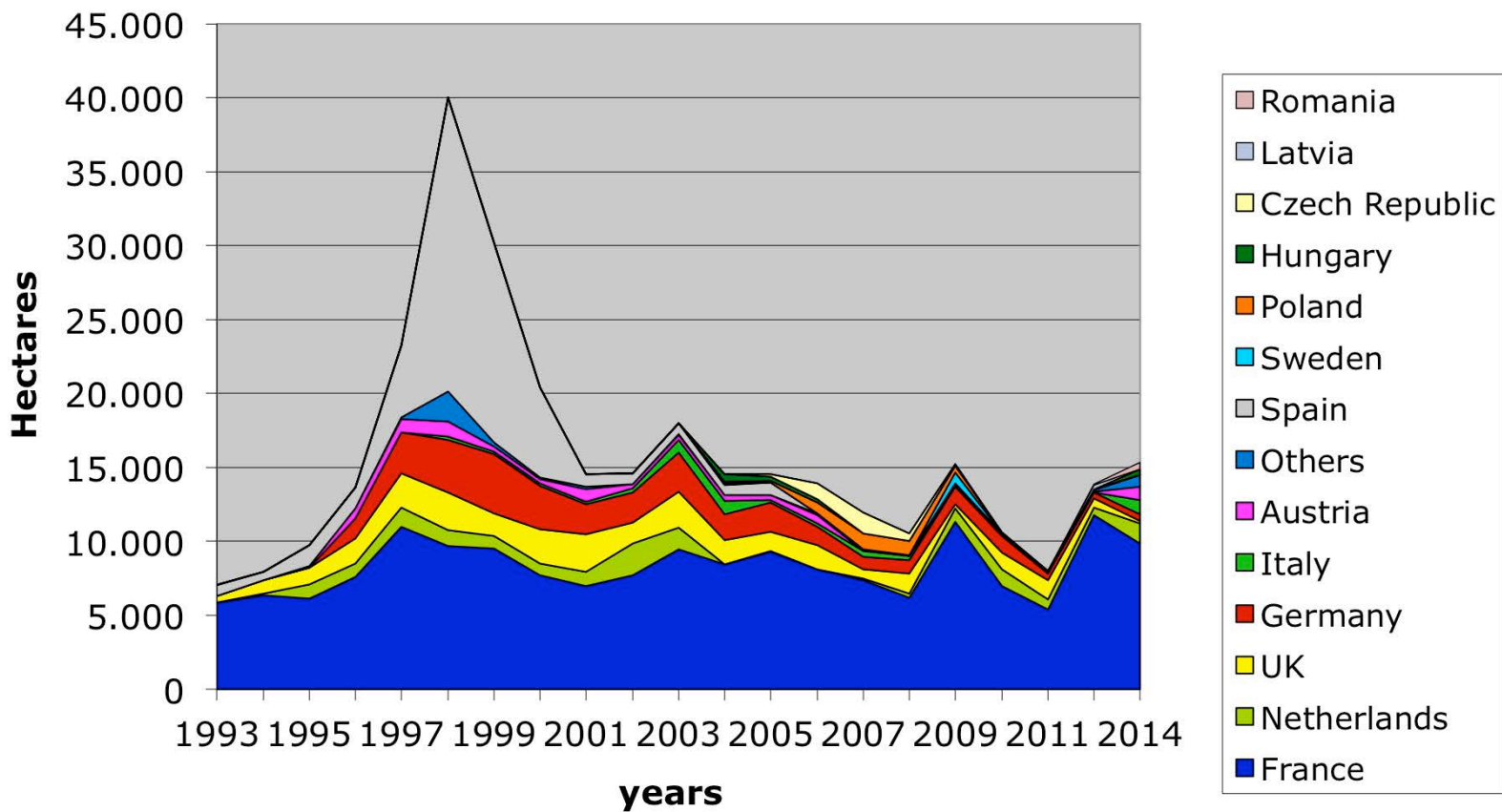


# EU Hemp cultivation area is growing again!

## No official data for 2014 – more countries involved

Hemp Cultivation Area in the EU (ha)

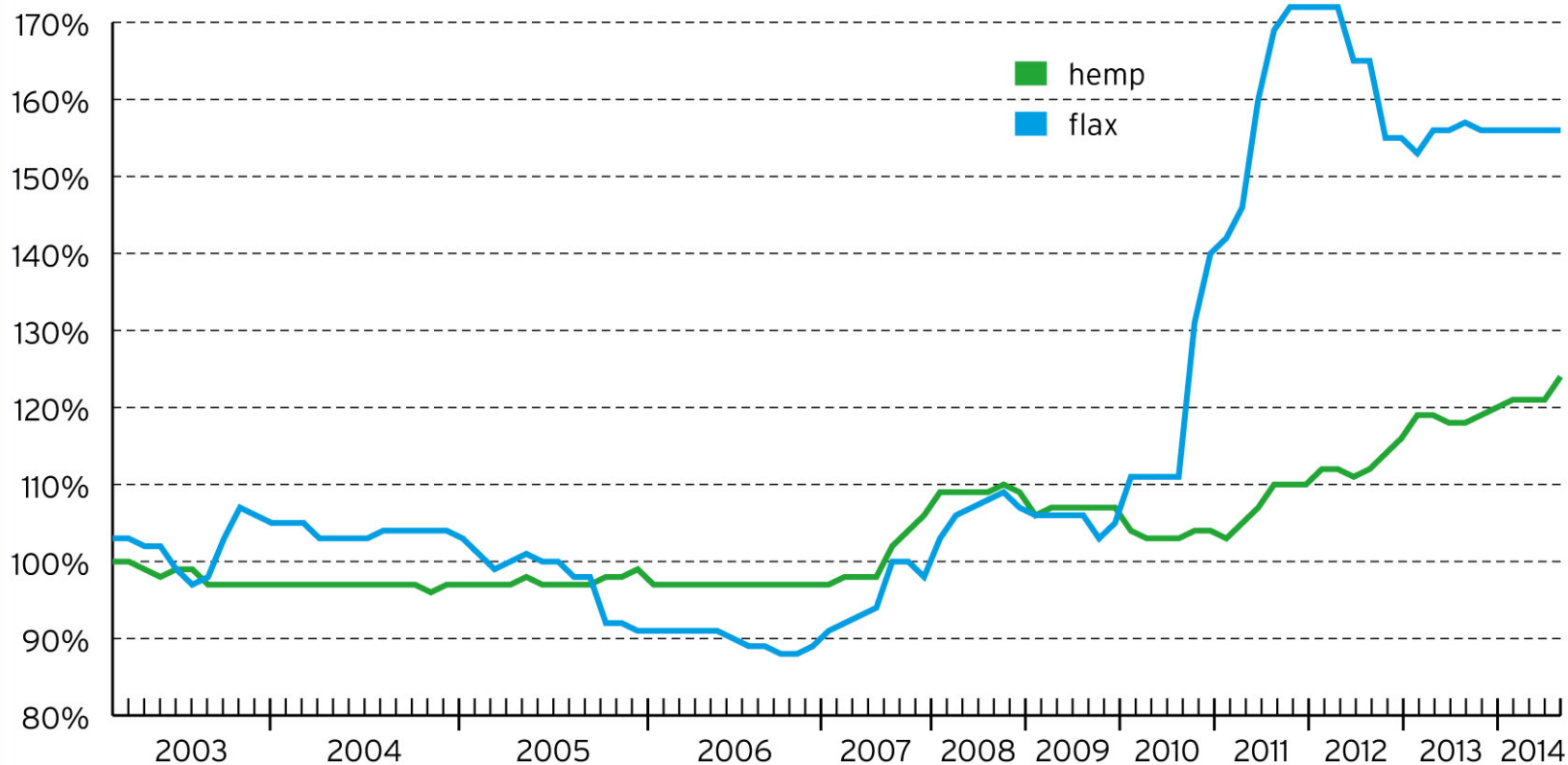
**2014: ca. 15,000 ha**



## Cultivation area 2014: 15,455 ha

<b>The Netherlands</b>	<b>1462</b>	<b>Italy</b>	<b>500</b>
HempFlax	534	Assocanapa	500
Dun Agro	928		
<b>Germany</b>	<b>486</b>	<b>Romania</b>	<b>385</b>
HempFlax (west)	209	HempFlax	385
HempFlax/BaFa (east)	127		
Hanf Farm	150	<b>Hungary</b>	<b>450</b>
		Hempro Int.	250
<b>Austria</b>	<b>550</b>	Hemp Factory	200
BaFa	550		
<b>UK</b>	<b>160</b>	<b>Denmark</b>	<b>162</b>
different small growers	160	Dun Agro	162
<b>France</b>	<b>9900</b>	<b>Slovenia</b>	<b>500</b>
LCDA	5400	Hannah biz plus others	500
Interval Eurochanvre	1700		
Planet Chanvre	850	<b>Croatia</b>	<b>300</b>
Cavac	1100	total	300
CCPSC	730		
Est Chanvre	120	<b>Baltic states</b>	<b>600</b>
		2 big and many small	600

## Price index: Hemp and flax technical short fibres



100 % equal the price of technical hemp short fibres in March 2003. Basis: Supply of 100 t per year.

Sources: nova-Institute GmbH on the basis of bi-monthly price reports from: Agrofibre SAS (F, since 2009), Badische Naturfaseraufbereitung BaFa GmbH (D), Hemp Technology Ltd. (UK), HempFlax B.V. (NL), Holstein Flachs GmbH (D), Linolitas (LT, until 2007-12), NAFGO GmbH (D, until 2008), Procotex SA Corporation (B, until 2005-10, since 2013-10), Sachsen-Leinen GmbH (D, since 2003-10), SANECO (F, since 2008).

# Agenda

1. **Assessment of the votes**
2. **Status report on EIHA and Hemp**
3. **Looking back – EIHA activities in 2014**
4. **Financial report of the EIHA**
5. **Exoneration of the Board of Directors**
6. **Outlook, guidelines and focus of EIHA activities in 2014/15**



## Lobbying in Brussels: Structure and representatives

- **John Hobson** (Plant Fibre Technology, UK): As a president involved in all lobbying activities.
- **Sylvestre Bertucelli** (InterChanvre, FR): Focus on CAP reform, DG Agriculture, European Parliament and Copa-Cogeca. Continue lobbying for inclusion of Hemp in the “Ecological Focus Area” (EFA).
- **Michael Carus** (nova-Institut, DE): EIHA is part of CEN TC 411 and the “Bio-based Expert Group”, DG Enterprise – high level committee to steer the Bio-based Economy. Also: Bio-based panel.
- **Lara Dammer & Roland Essel** (nova-Institut, DE): EIHA is member of CEN/TC 411, bio-based products, Certification and Sustainability / LCA.
- **Daniel Kruse (Hempro, DE) & Sylvestre Bertucelli** (InterChanvre, F): Food Drink Europe.

## European Industrial Hemp

Pulp & Paper, Insulation, Biocomposites & Construction,  
Food & Feed and Pharmaceuticals

The perfect green material – good for the environment



Pictures: Hempro Int. (DE), Hemp Technology (UK) and nova (DE)

### Hemp Seeds

- are a nutritional powerhouse
- excellent and unique fatty acid spectrum
- high protein quality

### Hemp Fibre

- good mechanical properties
- good availability at low cost
- the perfect reinforcement for your (bio-based) plastics
- no competition with food production



Pictures: Hemp Technology (UK)



Picture: NPSP (NL)

High carbon capture by Hemp fibre insulation fleece. Picture: Hock (DE)

## Applications for Hemp Fibres

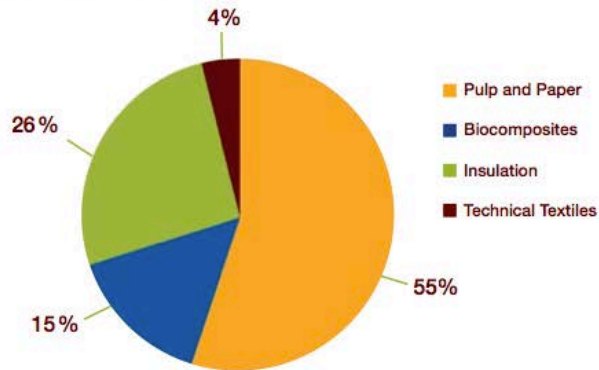
Hemp fibres have some of the best mechanical properties of all natural fibres. They are mainly used for speciality pulp & paper, insulation material and for bio-composites in automotive applications.

Before the rediscovery of industrial Hemp in Europe in the 1990s, Hemp fibres were mainly (> 95%) used for speciality pulp & paper. Nevertheless in 2014, Hemp pulp & paper with a share of 55% is still the most important market for European Hemp Fibres, supplied mainly by French producers.

Insulation material is the second most important application for Hemp fibres today. Insulation material accounts for 26% of the applications or if you take out pulp & paper nearly 60%. Together with other non-woven applications like mulch fleeces which are used in gardens and agriculture. Cress growing fleeces in some European countries are the dominant medium used for cress cultivation. And other non-wovens such as mats for farrowing pigs, the share of this applications group is 30%.

Biocomposites account for 15% of the applications, without pulp & paper 33%. The only really established biocomposite market is press (or compression) moulding in automotive interior applications with a share of 96% of all biocomposites. This corresponds to more than 3,700 tonnes of Hemp fibre or about 7,500 tonnes of biocomposites (natural fibre content varies between 30 and 70%). Automotive biocomposites for interior applications are still a growing market and are used for door panels/inserts, trunkliners, spare wheel covers, parcel trays, headliners, A-B-C columns and much more.

Applications for European Hemp Fibre from harvest 2010, in total 26,000 metric tonnes (EIHA 2012)



Cases, natural fibre and polypropylene, compress moulding (Germany).



Urn, Hemp fibre and bioplastics, compress moulding or injection moulding (Germany).



**Hemp is good for agriculture, the environment and enhances regional development**

**Environment**

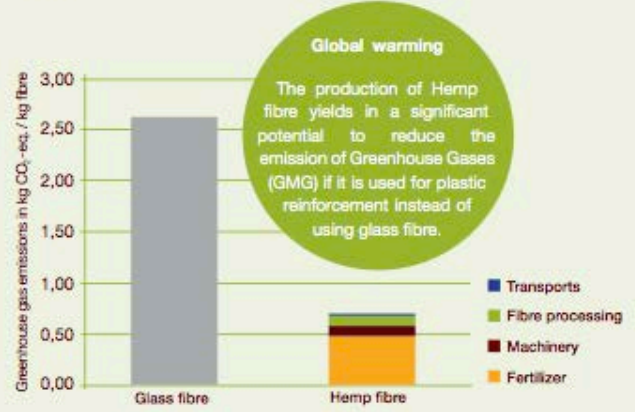
Hemp fibre



The environmental friendly cultivation of the Hemp crop (*Cannabis sativa L.*) is a key driver for economic success and the future expansion of sustainable Hemp products:

- Due to its vigorous growth and disease resistance, Hemp can be grown without the use of any agrochemicals, this is rare in agriculture today.
- In times of increasing monocultures, Hemp is an enrichment for agro-biodiversity, a true rotational crop.

The processing of Hemp into its main products and by-products such as fibres and shivs requires no chemical additives and no water. Where Hemp is used in applications it has brought considerable ecological benefits.





Picture: Hemp Technology (UK)

## Applications for Hemp Shivs

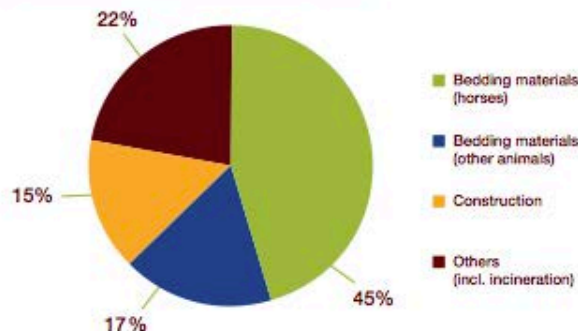
High performance bedding material for horses and other animals like chickens is today the most important market for Hemp shivs. Hemp shivs can absorb moisture up to 4 times their dry weight. They are effective for much longer in the stable or poultry house compared to other materials thus saving working time. After use Hemp bedding rots down quickly into an excellent compost.

Of the total Hemp shiv applications equine bedding has a market share of 45% and other bedding 17%.

An interesting new and increasing market is using Hemp shivs in combination with lime for construction. Here the market share for shivs is currently 15%. Over the last few years hundreds of private houses have been built in France, the UK and Ireland with this new material, which can be sprayed into a timber frame construction. The material is easy to handle, price competitive, shows good insulation properties for a construction material and it appears to be crack proof, a good attribute for earthquake risk areas. Eco-construction experts especially are seeing great potential in Hemp-Lime-Construction.

Small amounts also go to the particle board industry. Hemp shivs can be used to produce light weight particle boards (half the density).

Applications for European Hemp shivs from harvest 2010, in total 44,000 metric tonnes (EIHA 2012) in total 26,000 metric tonnes (EIHA 2012)



## Pharmaceutical applications

THC, the well known cannabinoid responsible for the psychotropic as well as several pharmaceutical effects, exists only in very low concentrations in industrial Hemp (< 0.2%). In recent years, interest has been increasing in the therapeutic potential of another cannabinoids, which do not have any psychoactive effects. Even high doses do not cause any relevant side-effects. Cannabidiol (CBD) is the primary cannabinoid of industrial Hemp, present in concentrations in the range of 0.5 to 2% in the upper third of

the plant. There is potential for therapeutic use in a large number of diseases and symptoms. These include anxiety disorders such as post-traumatic stress disorder, psychosis, epilepsy, dystonia, diabetes, cancer, inflammatory diseases and Alzheimer's. In addition it may have an effect on skin diseases, hepatitis, obesity as well as ADHD (attention deficit/hyperactivity disorder). CBD can be utilized parallel to Hemp fibres and shivs, giving an extra income.

# Processors

## Hemp processors in the European Union

In Europe you can buy Hemp fibre directly from the processor. The following Hemp fibre producers are members of EIHA and together they can guarantee high quality standards and a secure continuity of supply. The seven listed Hemp processors produce on average each year between 10 and 15,000 tonnes of technical Hemp fibre. This is mainly used in natural fibre reinforced plastics and insulation materials. As Hemp is an annual crop this quantity can be easily and quickly increased according to demand.

### Hemp fibre, shivs and seed producers:



#### Assocanapa srl

Supplier of food, clothing, cosmetics, fibre & shivs

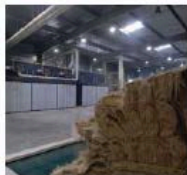
**Address** Via Morello 2/A  
10022 Carmagnola (Italy)  
**Contact** Giraud Felice  
**Phone** +39 (0) 11 9715898  
**E-mail** assocanapasrl@gmail.com  
**Internet** www.assocanapasrl.it



#### Hempro Int. GmbH & Co. KG

Supplier of food & clothing & cosmetics

**Address** Muensterstr. 336  
40470 Duesseldorf (Germany)  
**Contact** Daniel Kruse  
**Phone** +49 (0) 211 699 90 56-10  
**E-mail** d.kruse@hempro.com  
**Internet** www.hempro.com



#### CAVAC BIOMATERIAUX

Supplier of fibres & shivs

**Address** 12, Boulevard Réaumur BP 27  
85001 LA ROCHE-SUR-YON CEDEX  
**Contact** Olivier Joreau  
**Phone** +33 (0) 25 36 51 54  
**E-mail** o.joreau@cavac.fr  
**Internet** www.cavac-biomateriaux.com



#### Interchanvre

Association of french Hemp processors

**Address** 20 Rue Paul Ligneul  
72000 Le Mans (France)  
**Contact** Sylvestre Bertucelli  
**Phone** +33 (0) 243 51 15 05  
**E-mail** sylvestre.bertucelli@interchanvre.org  
**Internet** www.interchanvre.com



#### Dun Agro B.V.

Supplier of fibres & shivs

**Address** Raadhuisweg 11  
9665 JE Oude Pekela (The Netherlands)  
**Contact** Albert Dun  
**Phone** +31 (0) 597 675 592  
**E-mail** info@dunagro.nl  
**Internet** www.dunagro.nl



#### Planète Chanvre

Supplier of fibres & shivs

**Address** Bellevue RD 402  
77120 AULNOY (France)  
**Contact** Philippe Heusele  
**Phone** +33 (0) 96 69 47 726  
**E-mail** heusele.philippe@9business.fr  
**Internet** www.planetechanvre.com

Daughter Company of Planète Chanvre:



#### HempFlax B.V.

Supplier of fibres & shivs

**Address** Postbus 142  
9665 ZJ Oude Pekela (The Netherlands)  
**Contact** Mark Reinders  
**Phone** +31 (0) 597 615 516  
**E-mail** info@hempflax.com  
**Internet** www.hempflax.com



#### BAFA neu GmbH

Supplier of fibres & shivs & hempcrete solutions  
seeds & planting seeds & oil & CBD

**Address** Stephanstr. 2 76316 Malch (Germany)  
**Contact** Bernd Frank  
**Phone** + 49 (0) 7246 92 57 50  
**E-mail** info@bafa-gmbh.de  
**Internet** www.bafa-gmbh.de



# Seeds & Oil

Hemp seeds

## Hemp Seed is a nutritional powerhouse

"Hemp seed is a nutritional powerhouse," says German-American scientist Dr. Gero Leson. "It is an excellent source of several critical mineral nutrients and vitamins. Its oil has an outstanding fatty acid spectrum; its protein is balanced and easily digested. Moreover well prepared Hemp foods are very appetising. I am convinced that Hemp seeds have a great food potential. Their nutritional composition and culinary versatility are very much in line with several major trends in the science and marketing of food". In his comprehensive 1993 book on fat nutrition "Fats that heal, fats that kill", Dr. Udo Erasmus concluded "the best-balanced source of essential fatty acids is Hemp seed oil".



Hemp bars

Hemp oil



Hemp flour and hulled seeds & Hemp protein powder



Hulled seeds, protein, muesli, flour, whole seeds



Hemp muesli

Hemp bar

Hemp oil

Pictures: Hempro Int. (DE), HEMP SEED OIL EUROPE (UK)

## Hemp Seeds and Hemp Oil as Food

### Hemp Oil – excellent and unique fatty acid spectrum

Today's Hemp oil is typically a cold-pressed gourmet oil from mature well-dried seeds. Its most unique nutritional feature is the "almost perfect" balance of the omega-3 and -6 essential fatty acids plus the presence of two "higher" omega-3 and -6 fatty acids, stearidonic acid (SDA) and gamma linoleic acid (GLA). These offer known health benefits and are found in only a few other vegetable oils – yet nowhere as balanced and tasty as in Hemp oil.

A gross imbalance in the omega-3/6 ratio in the Western diet is now considered an important contributor to the high occurrence of inflammatory, cardiovascular, skin and even mental disorders. As a balanced source of these fatty acids, Hemp oil and seeds can help reduce their occurrence, in good taste.

### Hemp Protein – high quality

Hemp seeds and seed cake flour contain a high quality protein. It is easily digestible, and contains all essential amino acids in a balanced ratio that satisfies the protein needs of adults. Commercially available protein flour and powders are high in protein and dietary fibre. They are used in shakes and smoothies, as well as for baking.

### Minerals, Vitamins and other Micronutrients

Hemp seeds, nuts and flour also offer a bonanza of micronutrients that are often lacking in our diet. These Hemp seed materials are good or even excellent sources of magnesium, manganese, iron, zinc and potassium – and of several B1, B3 and B5 vitamins. Hemp seeds also contain significant amounts of phytosterols and of tocopherols, i.e. members of the Vitamin E complex. Overall, the nutritional richness and culinary versatility of Hemp seeds and their products make them an excellent basis for a healthy diet and a range of food products.

#### Typical Nutritional Composition of Shelled Hemp Seeds (per 100 gram)

Energy content:	580 kcal (2,430 kJ)
Fat:	45 g
Protein:	35 g
Total Carbohydrate:	8 g (Fibre: 6 g)
Ash:	6 g
<b>Selected Minerals and Vitamins (in percent of daily value, DV):</b>	
Phosphorus:	130 %
Magnesium:	150 %
Manganese:	450 %
Iron:	90 %
Zinc:	60 %
Vit B1 (thiamine):	90 %
Vit B3 (niacine):	30 %
Vit B5 (panthotenic acid):	90 %
Vit E (tocopherol):	20 %

#### Fatty acid composition of Hemp Oil (Varies with hemp variety)

Unsaturated fatty acids:	~ 90 %
Oleic acid (18:1 omega-9):	10 – 15 %
Linoleic acid (18:2 omega-6, essential):	55 – 60 %
Alpha-linolenic acid (18:3 omega-3, essential):	17 – 20 %
Gamma-linolenic acid (18:3 omega-6):	2 – 4 %
Stearidonic acid (18:4 omega-3):	0.5 – 2 %
Saturated fatty acids	~ 10 %



## European Industrial Hemp Association

EIHA was originally founded as an association of the members of the European Hemp Industry. Regular members include primary Hemp processors in the EU. Associate members may be associations, research organisations, companies and individuals working in the area of Hemp and other natural fibres. Founded in 2005, EIHA today has 10 regular and more than 72 associate members from 25 countries.

John Hobson is the President of EIHA and Michael Carus the Managing Director.

## Join EIHA and support the Hemp Industry

EIHA was founded to give industry a voice at the European Commission in Brussels. It has rapidly become a respected industry association that provides effective lobbying and serves as an information bank. The annual EIHA conference (more information at [www.eiha-conference.org](http://www.eiha-conference.org)) has become an important event in the industry and an attractive opportunity for members and visitors to meet, learn about developments and exchange views with their colleagues.

More information at [www.eiha.org](http://www.eiha.org)

## Board Member (B) and Executive Office (E)



**Mark Reinders (B)**  
 HempFlax (NL)

**John Hobson (B)**  
 Plant Fibre Technology (UK)

**Sylvestre Bertucelli (B)**  
 INTERCHANVRE (FR)

**Dominik Vogt (E)**  
 nova-Institute (DE)

**Bernd Frank (B)**  
 BaFa (FR/DE)

**Olivier Joreau (B)**  
 CAVAC (FR)

**Michael Carus (E)**  
 nova-Institute (DE)

**Daniel Kruse (B)**  
 Hempro Int. (DE)

## Modern Industry with high social standards. European Hemp Fibres are available now for your bio-based products!!

Many more companies are involved in the Hemp industry like non-woven, compounding and equipment businesses. Please look for a full list of EIHA-members at: [www.eiha.org](http://www.eiha.org)

Responsible for this leaflet:  
 European Industrial Hemp Association (EIHA)

### Executive Office of EIHA

nova-Institut GmbH  
 Chemiepark Knapsack  
 Industriestr. 300  
 50354 Huerth, Germany

Phone +49 (0) 22 33/48 14 - 40  
 Fax +49 (0) 22 33/48 14 - 50  
 E-mail [info@eiha.org](mailto:info@eiha.org)  
 Internet [www.eiha.org](http://www.eiha.org)

# New EIHA web page:



Welcome to

# EIHA

## European Industrial Hemp Association

Industrial Hemp: Pulp & Paper, Insulation, Biocomposites & Construction, Food & Feed and Pharmaceuticals

[www.eiha.org](http://www.eiha.org)

...online since  
Dec. 2014!

### Home

About EIHA

Documents

Downloads

Links

Imprint

The "European Industrial Hemp Association (EIHA)" has formed itself as an association of Hemp primary processing companies within the EU (regular members). Associate members are associations, national organisations, companies and individuals working in the field of Hemp or other natural fibres.

**Join the largest event on industrial hemp in May 2015:**

**12th International Conference of the European Industrial Hemp Association**

20 – 21 May 2015, Wesseling, Germany

### Contact



Executive Office  
nova-Institut GmbH  
Chemiepark Knapsack  
Industriestraße 300  
50354 Huerth, Germany

Tel.: +49-(0)2233-481440  
E-mail: [info@eih.org](mailto:info@eih.org)  
Internet: [www.eiha.org](http://www.eiha.org)

### Downloads



Survey on the European  
hemp industry - 2013

Document for The  
Commission & The  
Parliament - 2012 on  
CAP

[more downloads ->](#)

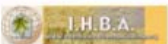
### Aims of the EIHA are

- To support the cultivation, processing and use of industrial Hemp – i.e. Hemp strains that are allowed to be cultivated in accordance with EU law and the raw materials of which are processed industrially – and its products.
- To collect important information on industrial Hemp and industrial Hemp policy, to publish data about the European Natural Fibres Industry and to establish market figures and trends.
- To give industrial partners easy access to the European Hemp Industry via the EIHA homepage.
- To establish a regular exchange of information between its members and to co-operate with other national, European and international organisations and associations.
- To represent the industry to EU institutions and National Ministries.
- To support communication between the National Ministries concerning EU-policy.
- To provide EU institutions, National Ministries, the media and the public with current and reliable information on industrial Hemp, to develop and submit recommendations for changes to present laws, regulations, standards and guidelines on EU and national levels.

### Why join EIHA?

- All questions about Hemp business are passed on to the relevant EIHA members
- Instant access to more than 350 presentations, studies and statistical data
- You will be part of a network of important international Hemp actors:  
Nearly 100 companies, associations, institutes and individuals are already supporting EIHA!

### Partners



# New EIHA web page:



Welcome to

# EIHA

## European Industrial Hemp Association

Industrial Hemp: Pulp & Paper, Insulation, Biocomposites & Construction, Food & Feed and Pharmaceuticals

Home

About EIHA

Documents

Downloads

Links

Imprint

### Partners



You are here: [Home](#) > [Documents](#)

### Documents

613 documents found. Documents marked with a are for members only.

- [Breeders Required 2014-11-19](#)
- [Request: Hemp Fields Focused on CBD Production 2014-10-30](#)
- [Request: Hemp 2014-10-30](#)
- [Request: Internship 2014-10-30](#)
- [Request: Hemp seeds 2014-10-19](#)
- [Hemp Project Bulgaria 2014-10-14](#)
- [Request: CBD Oil 2014-10-14](#)
- [Request: machinery for shelling hemp seeds 2014-10-10](#)
- [Seeds breeders and Seed and Fiber buyers wanted 2014-09-17](#)
- [Hemp seeds are under pressure in Europe 2014-09-14](#)
- [medical cannabis conference in Prague 2015 2014-09-10](#)
- [Request: European industrial hemp seed breeder 2014-09-10](#)
- [Request: Hemp Seed Supplier 2014-09-10](#)
- [Request: Hemp husks 2014-09-03](#)
- [Request: hemp seed for fully legal research 2014-08-26](#)
- [EIHA booth at the Composites Europe 2014 \(7 to 9 October 2014 in Düsseldorf, Germany\) 2014-08-21](#)
- [Information: Vicat 2014-08-20](#)
- [THC lab 2014-08-13](#)

### Search

Full-text search

Only free documents

Document type

Presentations

Studies

Statistic Data

Regulations

Minutes

News

[Extended Search >](#)

### Contact



Executive Office  
nova-Institut GmbH

# Business Cards of the Board of Directors & the executive office:



**John Hobson**  
President of EIHA

**PLANT FIBRE TECHNOLOGY**  
Hen Capel, Glasinfryn, Bangor, Gwynedd  
LL57 4UN, UK

Mobile  
+44 (0) 78 36 55 28 22  
E-mail  
john@plantfibretechnology.com  
Internet  
www.plantfibretechnology.com



**Sylvestre Bertucelli**  
Board of Directors

**INTERCHANVRE**  
20 Rue Paul Lignereul  
72000 Le Mans, France

Phone +33 (0) 243/51 15 05 Internet www.interchanvre.com  
E-mail sylvestre.bertucelli@interchanvre.org



**Bernd Frank**  
Board of Directors

**BAVE GMBH**  
Stephanstraße 2  
76316 Malsch, Germany

Phone +49 (0) 72 46/925 75-0 E-mail bafa@swol.de  
Fax +49 (0) 72 46/925 75-23 Internet www.bafa-gmbh.de



**Olivier Joreau**  
Board of Directors

**CAVAC BIOMATERIAUX**  
12, Boulevard Réaumur BP 27  
85001 La Roche-Sur-Yon Cedex, France

Phone +33 (0) 251/36 51 51 E-mail ojoreau@cavac.fr  
Fax +33 (0) 251/36 51 97 Internet www.cavac.fr



**Daniel Kruse**  
Board of Directors

**HEMPRO INT. GMBH & CO. KG**  
Muerrenstr. 336  
40470 Düsseldorf, Germany

Phone +49 (0) 211/699 90 56-10 E-mail d.kruse@hempro.com  
Fax +49 (0) 211/699 90 56-18 Internet www.hempro.com



**Mark Reinders**  
Board of Directors

**HEMPFLAX B.V.**  
Postbus 142, 9665 ZJ Oude Pekela  
The Netherlands

Phone +31 (0) 597/61 55 18 E-mail mark@hemplflax.com  
Fax +31 (0) 597/61 59 18 Internet www.hemplflax.com



**Michael Carus**  
Managing Director of EIHA

**NOVA-INSTITUT GMBH**  
Chemiepark Knapsack, Industriestr. 300  
50354 Hürth, Germany

Phone +49 (0) 22 33/48 14- 40 Internet www.eiha.org  
E-mail michael.carus@eiha.org

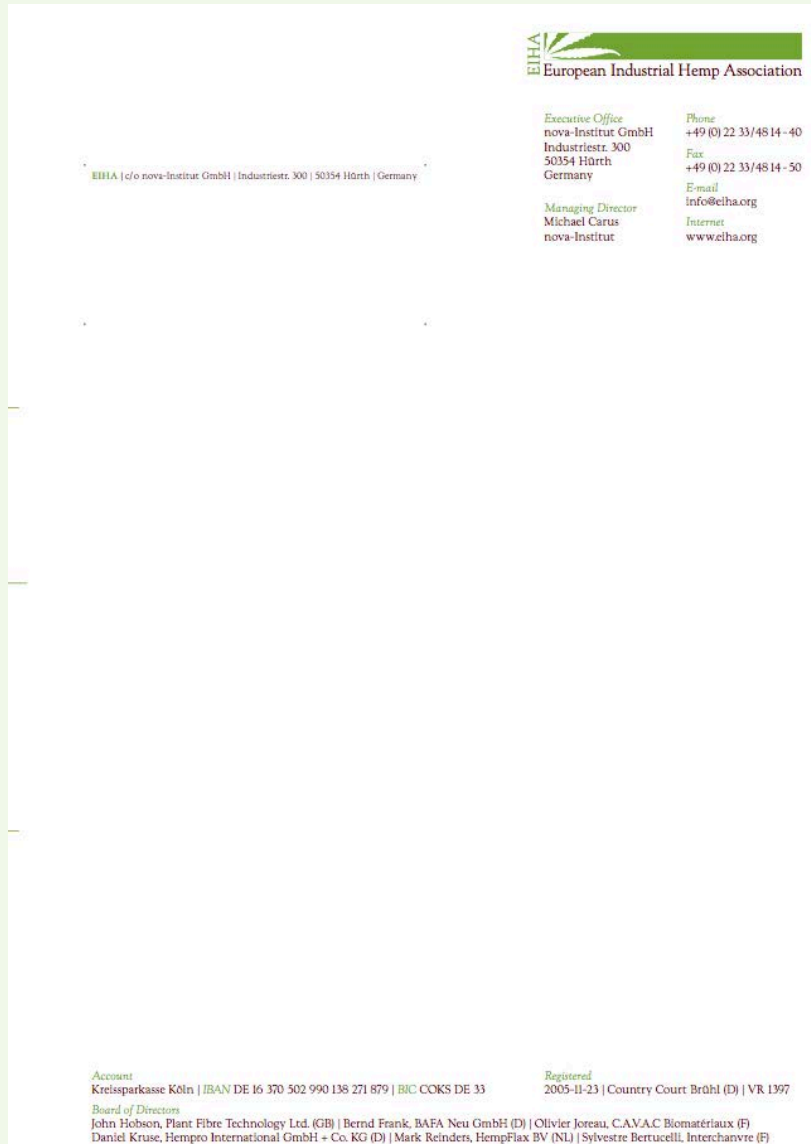


**Dominik Vogt**  
Executive Office of EIHA

**NOVA-INSTITUT GMBH**  
Chemiepark Knapsack, Industriestr. 300  
50354 Hürth, Germany

Phone +49 (0) 22 33/48 14-49 Internet www.eiha.org  
E-mail dominik.vogt@eiha.org

# Updated letter paper:



## Report on THC limits

**The following companies are supporting the report on THC limits – thank you very much!**

- AGROPRO UAB
- CANAH INTERNATIONAL SRL
- HANF FARM GmbH
- Hempflax BV
- Hemp Factory GmbH
- Hempro International GmbH
- PROPAGANDA PRODUCTION S.R.O
- Nutiva

# Updated Report on THC limits in food

## *Table of contents:*

### **THC Limits and Regulations around the World:**

#### *THC Limits and Regulations in Europe*

Switzerland  
German  
United Kingdom  
The Netherlands  
Italy  
Austria  
Belgium  
Denmark

#### *THC limits and regulations in non-European countries*

Canada  
USA  
Australia and New Zealand

### **EFSA feeding issue**

## Cooperation with EFSA

- **Summary**
  - European Commission's request to EFSA
  - The action was a consequence of THC being detected in milk of Swiss origin.
  - Although EIHA welcomes regulation on this issue, it reiterates that the Swiss samples should not be considered hemp due to their high THC content, exceeding EU's norms.
  - Focus on milk: 'Contaminants in food: THC in milk' out in 2015
  - The Commission will hear stakeholders
  
- **1<sup>st</sup> Comm.: Market and metabolisation (1 email and 1<sup>st</sup> report)**
  
- **2<sup>nd</sup> Comm.: Hempro statistics (1 email and stats paper)**
  
- **3<sup>rd</sup> Comm.: Milk and THC variations (2x emails, individual values and Standard Deviation; THC differences and chocolate values)**



## **Literature Review on Lowest Observed Effect Levels and No effect levels**

*Pharmacological basis for a Lowest Observed Effect Level and No Observed Adverse Effect Level*

## **THC effects on human biological variations**

*Increased sensitivity of children, neonates and foetuses*

*Genetic variation in the genes encoding CB receptors and metabolizing enzymes*

*Pharmacological basis for deriving an Acceptable Daily Intake 34*

## **EIHA proposal on THC limits for different Hemp food products**

**Delta 9-THC and delta 9-THC-A content in food raw materials, consumer goods derived from the hemp plant and feed raw materials**

## **Impacts on the Hemp market, remarks and final conclusions**

## EIHA THC Proposals

- 2,5 mg/kg twice daily
- To be continued...

# International Business Directory for Bio-based Materials: iBIB2014/15 [www.bio-based.eu/iBIB](http://www.bio-based.eu/iBIB)

Further information here: [www.bio-based.eu/news](http://www.bio-based.eu/news)  Agencies - Associations - Clusters - Councils



EIHA was founded in 2005 as an association for the members of the European Hemp Industry. Regular members include primary Hemp processors in the EU. Associate members may be associations, research organisations and companies and individuals working in the area of Hemp fibres, shivs, seeds and oil. EIHA today has 10 regular and more than 80 associated members from 40 countries. EIHA was founded to give industry a voice in Brussels. It has rapidly become a respected industry association that provides effective lobbying and serves as an information bank.

The annual EIHA conference ([www.eiha-conference.org](http://www.eiha-conference.org)) – has become a popular opportunity to meet, learn about developments and exchange views with their colleagues. With 200 participants from 39 countries the 2014 conference was the largest event on industrial Hemp worldwide!

The total world cultivation area was around 85,000 ha in 2011, approximately 60,000 ha for fibres (mainly China and Europe) and 25,000 ha for seeds (mainly Canada, China and Europe).

In 2014, Hemp is cultivated on 17,000 ha in the EU, the largest area for 10 years, with a growing share of seed production. Industrial Hemp is grown today in at least 13 Member States. The expected production of Hemp fibres is more than 20,000 t and for Hemp seeds about 10,000 t.

Industrial Hemp is well known for its strong fibres, which are increasingly used in the European automotive industry for the reinforcement of interior plastic parts, as well as for environment-friendly insulation material and cross growing fleeces. The woody core of the Hemp plant, shivs, is used for animal bedding, garden mulching, light weight particle boards and mixed with lime for domestic and industrial construction. Hemp seed and oil are a nutrition powerhouse with an outstanding fatty acid spectrum; its protein is balanced and easily digested. From the leaves and flowers of industrial Hemp pharmaceuticals such as CBD can be produced as a by-product. This high therapeutic and financial potential is a recent discovery.

The European Hemp Industry can deliver to your business Hemp raw materials with high quality, high social standards, low carbon footprint and an increasing volume that is price competitive. Hemp fibres will be probably soon be the first natural fibres with Sustainability Certification. For your requirements you can make contact with the Hemp processors via our website [www.eiha.org](http://www.eiha.org)



Picture sources (left to right): Hempro Int., NPSF, nova-Institute

## EUROPEAN INDUSTRIAL HEMP ASSOCIATION (EIHA)

### Foundation

- 2005

### Members

- Regular members: 10
- Associate members: 80

### Key services

- Effective lobbying at the European Commission in Brussels
- Consulting
- Networking
- Huge EIHA database, more than 300 presentations, reports and documents

### Contact

European Industrial Hemp Association (EIHA)  
 nova-Institut GmbH  
 Chemiepark Knapsack  
 Industriestr. 300  
 50354 Huerth  
 Germany  
 Phone: +49 (0) 2233 48 14 49  
 Fax: +49 (0) 2233 48 14 50  
[info@eiha.org](mailto:info@eiha.org)  
[www.eiha.org](http://www.eiha.org)

### Contact person



Michael Carus  
 Managing Director

**Downloads of the whole iBIB-PDF since publication in summer 2014: 3,000!**



# EIHA at WIKIPEDIA again!

...english edition follows a.s.a.p.!

[Benutzerkonto erstellen](#) [Anmelden](#)

Artikel [Diskussion](#)

[Lesen](#)

[Bearbeiten](#)

[Versionsgeschichte](#)



## European Industrial Hemp Association

Die **European Industrial Hemp Association** (EIHA) ist ein Zusammenschluss der hanfverarbeitenden Industrie und vertritt die gemeinsamen Interessen der Nutzhanfanbauer sowie der industriellen Verarbeiter von **Nutzhanf** auf nationaler und internationaler Ebene. EIHA ist der größte Verband im Sektor der industriellen Hanfnutzung in Europa. Ursprünglich als Vereinigung der europäischen Nutzhanfindustrie gegründet, stammt ein Viertel der Mitglieder aus Ländern außerhalb der EU<sup>[1]</sup>.

Die Mitglieder stammen aus 31 verschiedenen Ländern und setzen sich aus Akteuren des Nutzhanfanbaus, -verarbeitung und -handels, der Bau-, Lebens- und Futtermittelindustrie sowie der pharmazeutischen Industrie zusammen. Außerdem sind Forschungsinstitute und Finanzinvestoren vertreten. Beigeordnete Mitglieder sind Verbände, Forschungsinstitute, (Handels-)Unternehmen und Individuen aus den Bereichen Nutzhanf und anderen Naturfasern, ordentliche Mitglieder sind Nutzhanfverarbeiter. Die EIHA veröffentlicht regelmäßig Daten über die europäische **Naturfaser**-Industrie.<sup>[2]</sup>

Seit 2011 ist EIHA Mitglied des Fachausschusses „bio-based products“ CEN/TC411<sup>[3]</sup> des **Europäischen Komitees für Normung** (CEN). Seit 2013 ist EIHA Mitglied der „Expert Group on Bio-based Products“<sup>[4]</sup>. Ebenfalls seit 2013 ist EIHA Mitglied des Fachausschusses des „Bioeconomy Panel“ der Europäischen Kommission und seit 2014 Mitglied im Fachausschuss „sustainable bio-resources for a growing bioeconomy“ des „Standing Committee on Agricultural Research“ (SCAR) der Europäischen Kommission<sup>[5]</sup>.

Die seit 2003 jährlich stattfindende „International Conference of the European Industrial Hemp Association“ war 2014 mit über 200 Teilnehmern aus 39 Ländern<sup>[6]</sup> eine der größten Konferenzen zum Thema Nutzhanf weltweit. Die steigende Besucherzahl der letzten Jahre steht im Einklang mit dem Wachstum der Branche.<sup>[7]</sup>

### Literatur [\[Bearbeiten\]](#)

- Haufe, J. und Carus, M. 2001: Hemp Fibres for Green Products – An assessment of life cycle studies on hemp fibre applications. [http://www.eiha.org/attach/639/11-07-07\\_META-LCA\\_Hemp\\_Fibre\\_Products.pdf](http://www.eiha.org/attach/639/11-07-07_META-LCA_Hemp_Fibre_Products.pdf)
- Juliane Haufe, Michael Carus: "assessment of life cycle studies on hemp fibre applications". Bioplastics MAGAZINE 1, 2011.
- Michael Karus, Francois Desanlis: *The Industrial Hemp Association (EIHA)*. Journal of Industrial Hemp 7 (1), 2002.
- nova-Institut (Hrsg.): *Das kleine Hanf-Lexikon*. Verlag Die Werkstatt, Göttingen, 2. Auflage, 2003, S. 63–64, ISBN 3-89533-271-2

### Weblinks [\[Bearbeiten\]](#)

- [Website der European Industrial Hemp Association](#)
- [Website der International Conference of the European Industrial Hemp Association](#)

### Belege [\[Bearbeiten\]](#)

1. ↑ <http://eiha.org/mitglieder.php> Abgerufen am 29. Oktober 2014.
2. ↑ <http://www.eiha.org/nachrichten.php?typ=60> Abgerufen 29. Oktober 2014.
3. ↑ [http://standards.cen.eu/dyn/www/?p=204:42:0:::;FSP\\_ORG\\_ID,FSP\\_LANG\\_ID;22&cs=1A3FFBC44FAB6B2A181C9525249C3A829](http://standards.cen.eu/dyn/www/?p=204:42:0:::;FSP_ORG_ID,FSP_LANG_ID;22&cs=1A3FFBC44FAB6B2A181C9525249C3A829) Abgerufen am 20. Oktober 2014.
4. ↑ <http://ec.europa.eu/transparency/regexpert/index.cfm?do=groupDetail.groupDetail&groupID=2886> Abgerufen am 20. Oktober 2014.
5. ↑ <http://eiha.org/nachricht.php?typ=121>
6. ↑ <http://www.eiha-conference.org/11/tnlist>
7. ↑ [Allgemeiner Vliesstoff-Report: http://www.avronline.de/news/show/branchen-news/108490](http://www.avronline.de/news/show/branchen-news/108490) Abgerufen am 22. Oktober 2014.

Kategorien: [Nutzhanf](#) | [Internationale Vereinigung](#) | [Verein \(Nordrhein-Westfalen\)](#)

Diese Seite wurde zuletzt am 24. November 2014 um 17:39 Uhr geändert.

# EIHA at WIKIPEDIA again!

- Cooperation with EFSA, comprehensive answers to all questions
- Product Environmental Footprint (PEF) for insulation materials – Joining of the group was finally NOT possible.

## Booth at the

7th Int. International Conference on Bio-based Material, Cologne, April 2014  
([www.biowerkstoff-kongress.de](http://www.biowerkstoff-kongress.de)). 150 participants during three days.



## Booth at the Composites Europe 2014

Düsseldorf, Germany: 11,000 visitors, 440 exhibitors





# 11<sup>th</sup> International Conference of the European Industrial Hemp Association (EIHA)

May 21<sup>st</sup> – 22<sup>nd</sup> 2014, Rheinforum Wesseling (near Cologne, Germany)



Sponsors

### Partner



## Record participation in 2014!

## > 200 Participants from 39 countries

### Sponsors



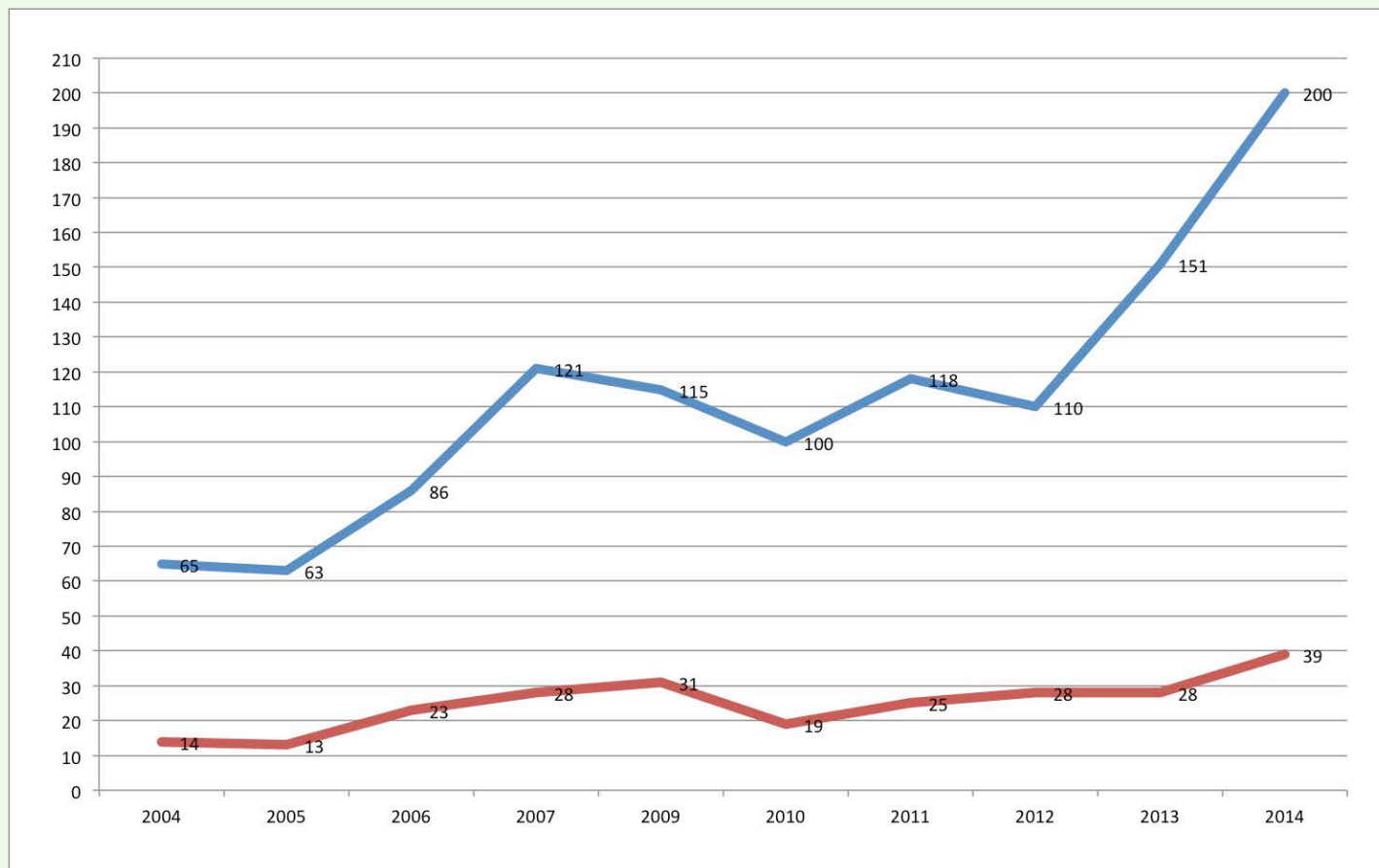
### Media-Partner





## Record participation in 2014!

> 200 Participants (blue) from 39 countries (red)



# Register now: 12<sup>th</sup> Int. Conference of the EIHA

20 – 21 May 2015, Rheinforum, Wesseling, [www.eiha-conference.org](http://www.eiha-conference.org)



## 12<sup>th</sup> International Conference of the European Industrial Hemp Association (EIHA)

May 20<sup>th</sup> – 21<sup>st</sup> 2015, Rheinforum Wesseling (near Cologne, Germany)


 European Industrial Hemp Association



Sponsor

- Home
- Registration
- Service
- Exhibition
- Previous conferences
- Terms and Conditions
- Contact/Imprint

## 12th International Conference of the European Industrial Hemp Association

20 - 21 May 2015, Wesseling near Cologne, Germany

**Largest Industrial Hemp Conference world wide!  
200 participants in 2014 - and expected again for 2015!**

The conference will present the latest technology developments and applications of industrial hemp for bio-composites, food, feed, insulation, construction and pharmaceutical applications.

The International Conference of the European Industrial Hemp Association (EIHA) is established as the largest meeting of experts on industrial hemp in Europe and indeed worldwide. Specialists from all over the world will meet in order to exchange information regarding the latest developments in hemp and in other natural fibres and moreover on the applications for fibres, shivs (hurds), seeds, oil and CBD.

Participants will range from cultivation consultants, primary and further processors, traders, scientists and engineers, and investors to numerous small and medium-sized enterprises and to international automotive companies and suppliers. The conference language will be English.

  
 Produktion - Vertrieb - Beratung

Leaflet of the Conference



Organizer

nova-Institut GmbH  
 Mr. Dominik Vogt  
 Chemiepark Knapsack  
 Industriestraße 300

### Venue

Rheinforum  
 Kölner Straße 42  
 50389 Wesseling, Germany



# Preliminary Programme: 12<sup>th</sup> Int. Conference of the EIHA

20 – 21 May 2015, Rheinforum, Wesseling, [www.eiha-conference.org](http://www.eiha-conference.org)

## Introduction

**John Hobson** (Plant Fibre Technology, UK): European Industrial Hemp Association (EIHA) - status and outlook

**Michael Carus** (nova-Institut GmbH, Germany): World-wide market data on hemp and other bast fibres

## Country overview

**Rachele Invernizzi** (Assocanapa Srl, Italy): The history of the Italian hemp

**David Rosse** (Österreichischer Hanf Verband, Austria): The Austrian hemp market overview of the market - development - expectations/ perspectives

**Hana Gabrielová** (HEMPOINT, s.r.o., Czech Republic): Latest developments on Czech industrial hemp market - (Including hemp flowers)

# Preliminary Programme: 12<sup>th</sup> Int. Conference of the EIHA

20 – 21 May 2015, Rheinforum, Wesseling, [www.eiha-conference.org](http://www.eiha-conference.org)

## Bio-based composites

**Professor Dr. Jörg Müssig & Nina Graupner** (University of Bremen, Germany): Hemp fibre composite - potentials and applications

**Dr. Christian Fischer** (Bcomp Ltd., Switzerland): The powerRibs – a cost-effective high-tech solution

## Food

**Daniel Kruse** (Hempro International GmbH & Co. KG, Germany) & **Luis Sarmiento** (nova-Institut GmbH): THC limits for food and feed and the EFSA case

## Building & Construction

**Jorgen Hempel** (Hemp Eco Systems, Switzerland): The building of healthy houses and buildings

# Preliminary Programme: 12<sup>th</sup> Int. Conference of the EIHA

20 – 21 May 2015, Rheinforum, Wesseling, [www.eiha-conference.org](http://www.eiha-conference.org)

**CBD** – not fixed yet – proposals or submissions only!

## **Scientist (1)**

Dr. Franjo Grotenhermen (nova-Institut GmbH)

## **Pharma (3)**

**GW** and **Bedrocan** – OK, but you could also add **Holger Rönitz** (THC-Pharm) to this group!

## **Entrepreneurs (2-3)**

**Paul Benhaim**

**Rafael Dulon** (MH Medical Hemp GmbH)

**Galathea Bisterfeld von Meer** (Claremont Collection GmbH)

# Agenda

1. **Assessment of the votes**
2. **Status report on EIHA and Hemp**
3. **Looking back – EIHA activities in 2014**
4. **Financial report of the EIHA**
5. **Exoneration of the Board of Directors**
6. **Outlook, guidelines and focus of EIHA activities in 2014/15**

## Report on current financial situation

<b>Current balance (28 November 2014) – including 15,000.00 € donations for THC report</b>	<b>35,602.48 €</b>
Membership fees not paid yet (2014)	<b>6,600.00 €</b>
<b>Expenditures / costs since 15th General Meeting (May 2014 – 28 November 2014)</b>	<b>10,225.00 €</b>
Layout business cards & leaflet & webpage	600.00 €
Print business cards	375.00 €
New web page (content management system) of the EIHA based on a word press system	4.760,00 €
Banking fees	300.00 €
EIHA leaflet	930.00 €
Translation costs THC report (for EFSA)	350.00 €
Traveling costs to Brussels Meeting	260.00 €
General Meeting, May 2014 (dinner buffet)	1,450.00 €
Booth & parking costs at Composites Europe, Oct. 2014	1,200.00 €

## List of non-paying members

(work status: 9 December)

<b>Bradford Stricker</b>	200 €
<b>Aleksandr Nastenکو</b>	200 €
<b>Martin Ahlström</b>	300 €
<b>Efthymia Alexopoulou</b>	300 €
<b>Dr. Jace Callaway</b>	300 €
<b>Hempeco Hempeco</b>	300 €
<b>Anne Herrmann</b>	300 €
<b>Attila Hidvegi</b>	300 €
<b>Luis Lazcoz</b>	300 €
<b>David Rosse</b>	300 €
<b>Rene Sauveur</b>	200 €
<b>Francois Desanlis</b>	400 €
<b>Daluxolo Kunene</b>	600 €
<b>Prof. Dr. Eun Soo Kim</b>	600 €
<b>Lyn Stephenson</b>	600 €
<b>Giraudو Felice</b>	1.400 €



# Financial overview in 2014/2015

<b>Coming expenditures in 2015 (December 2014 – May 2015)</b>	<b>approx. 40,000.00 €</b>
EFSA – comprehensive answers, done	2,880.00 €
Booth & parking tickets @ Composites Europe 2015, Stuttgart (if 3 companies will man the stand)	1,300.00 €
Banking fees and credit card payment provider	600.00 €
Liaison 2015, TC 411	600.00 €
Traveling costs to Brussels & Meetings	1,000.00 €
Booth at 8th International Conference on Bio-based Materials 2015	950.00 €
General Meeting December 2014 (expected)	1,000.00 €
Meeting Board of Directors (expected)	500.00 €
Leaflet automotive (carbon footprint & sustainability of different NF for Biocomposites) (4,000 € will be paid by industry); estimated printing costs 500 € (proposal)	4,500 €
ISCC+ certification – preparation of offers and decisions	4,800.00 €
THC limits in food and feed – report, budget proposal:	10,000.00 €
Donation	12,000.00 €

# Financial overview in 2014/2015

<b>Expected budget in 2015 (members by 28 November 2014)</b>	
10 regular members x 1,500 € (or more)	15,000.00 €
91 associate members x 300 €	approx. 27,000.00 €
<b>In total</b>	approx. 40,000.00 €
<b>Current balance (28 November 2014)</b>	35.602,48 €
<b>Expected budget (December 2014 – May 2015)</b>	<b>75,600.00 €</b>
<b>Expected expenditures in 2015 (December 2014 – May 2015)</b>	<b>40,000.00 €</b>
<b>Total expected budget 2015</b>	<b>(approx.) 35,500.00 €</b>

# Agenda

1. **Assessment of the votes**
2. **Status report on EIHA and Hemp**
3. **Looking back – EIHA activities in 2014**
4. **Financial report of the EIHA**
5. **Exoneration of the Board of Directors**
6. **Outlook, guidelines and focus of EIHA activities in 2014/15**

## **Exoneration/discharge of the Board of Directors for their work in 2014**

**ONLY ONE TIME PER YEAR – always at the General Meeting in November/December**

0 votes against its exoneration  
xx votes for its exoneration  
0 abstention

# Agenda

1. **Assessment of the votes**
2. **Status report on EIHA and Hemp**
3. **Looking back – EIHA activities in 2014**
4. **Financial report of the EIHA**
5. **Exoneration of the Board of Directors**
6. **Outlook, guidelines and focus of EIHA activities in 2014/15**

## Additional activities - ongoing:

- **Booth at the Composites Europe 2015** – the costs of 3,900 € were shared by three companies (again CAVAC, HempFlax, PlanetChanvre???) and EIHA (900 €).
- **Booth at the 8th International Conference on Bio-based Materials**, April 2015, booked (ca. 1,000 €).
- **“Updated Report on THC limits in food”** – Budget 8,200 € has to be expanded to 10,000 € because of additional work by Luis and Linda. (with support from Jace, Anndrea, Stephano, Prof. Brenneisen, Eberhard Pirich (BIONORICA & Board member of the European Health Forum has excellent contacts to EFSA) and Bruce Cottrill (ADAS UK) and Germany BFR, both already involved by EFSA).

## Additional activities - ongoing:

- “**Carbon Footprint and Sustainability of different Natural Fibres for Biocomposites**”, study will provide LCA data for the automotive industry, first draft of the report in January 2015. EIHA will support this work with 4,000 €, additionally 4,000 € coming from the Hemp and non-woven industry - plus additional printing costs.
- “**Sustainability certification for Hemp Fibres and other raw materials**”. Martha prepared the offers of different certifiers in detail and will report at the GM about status and next steps (Additional 10 days work so far); certification of Planet Chanvre, CAVAC and HempFlax will be supported by EIHA – additional members interested?
- Life cycle assessment (LCA) of hemp fibre insulation material – status **MultiHemp** project (Michael)
- Summer 2015: Round robin lab test on **THC measurements** (Michael, Daniel)
- Summer 2015: **Quality label** and **guideline** for **hemp seeds** (Michael, Daniel)

## **Additional activities - ongoing:**

- Cooperation with other Associations like Slovenia, India and CELC (John)
- Meeting between EIHA and LCDA + Eurochanvre refereed by Interchanvre (Olivier, Sylvestre, John)
- No marketing emails to EIHA members?! (Daniel)
- CBD - official standpoint in this issue by EIHA? (Boris)



## Benefits for EIHA members?

- Regular member are featured on the EIHA leaflet
- All questions and requests from the industry (more than 200 per year) are circulated to all EIHA members, creation of a hemp market place
- Free access to the huge EIHA database, more than 400 **presentations**, reports and documents
- Help the Hemp Industry to grow!  
Help lobbying!  
Don't let the policy forget Hemp!
- **With your support EIHA can realise**
  - **Information leaflets on hemp**
  - **Position Papers to Policy**
  - **Lobbying in Brussels**
  - **Studies & Reports on Hemp helping the whole industrial hemp sector, internationally**